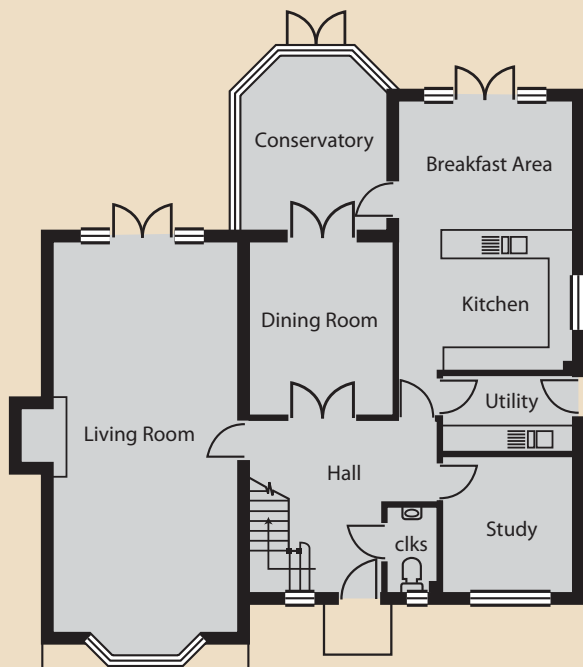




*Jenny Moody*  
Homes we are proud to put our name to

## Mill Road in Stock - Plot 1

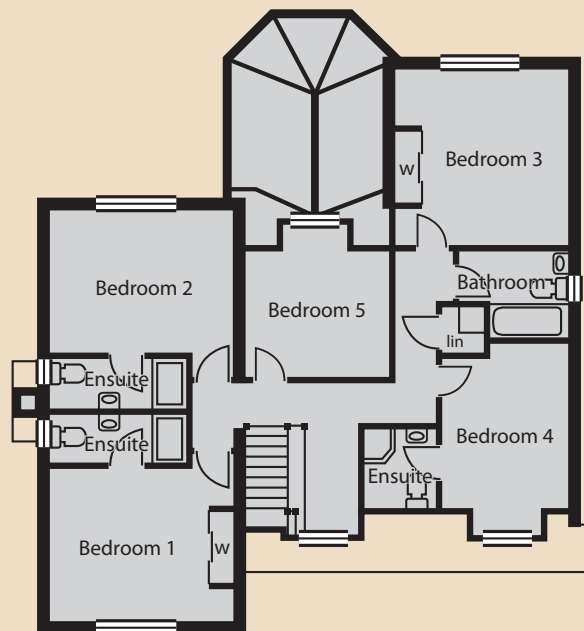
### Ground Floor



#### Specifications

Living Room	4475 x 8895mm / 14'8" x 29'2"
Study	3025 x 2975mm / 9'11" x 9'9"
Dining Room	3405 x 4000mm / 11'2" x 13'1"
Kitchen\	4075 x 6175mm / 13'4" x 20'3"
Breakfast Area	

### First Floor



#### Specifications

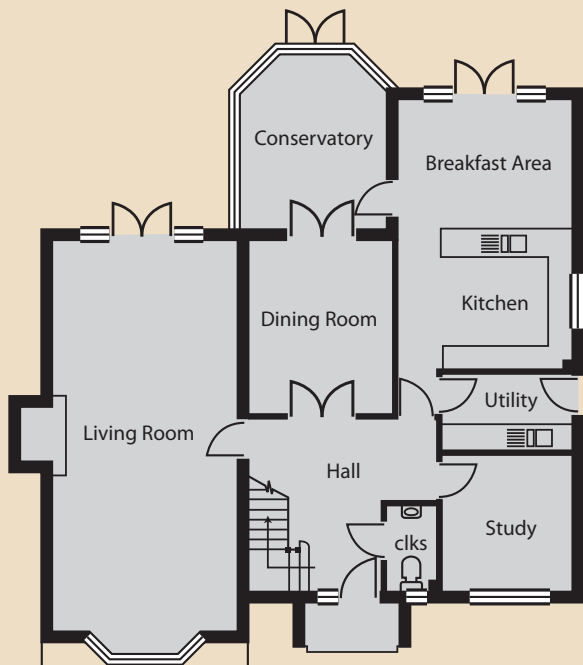
Bedroom 1	4475 x 3625mm / 14'8" x 11'10"
Bedroom 2	4475 x 3295mm / 14'8" x 10'9"
Bedroom 3	4075 x 3940mm / 13'4" x 12'11"
Bedroom 4	3025 x 4515mm / 9'11" x 14'9" (max)
Bedroom 5	3405 x 3575mm / 11'2" x 11'8" (max)



*Jenny Moody*  
Homes we are proud to put our name to

## Mill Road in Stock - Plot 2

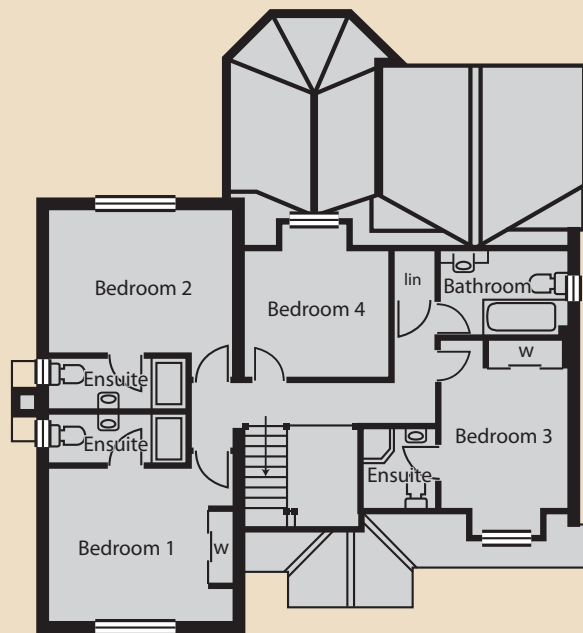
### Ground Floor



#### Specifications

Living Room	4475 x 8895mm / 14'8" x 29'2" + Bay
Study	3025 x 2975mm / 9'11" x 9'9"
Dining Room	3405 x 4000mm / 11'2" x 13'1"
Kitchen\	4075 x 6175mm / 13'4" x 20'3"
Breakfast Area	

### First Floor



#### Specifications

Bedroom 1	4475 x 3625mm / 14'8" x 11'10"
Bedroom 2	4475 x 3295mm / 14'8" x 10'9"
Bedroom 3	3025 x 4515mm / 9'11" x 14'9" (max)
Bedroom 4	3405 x 3575mm / 11'2" x 11'8"