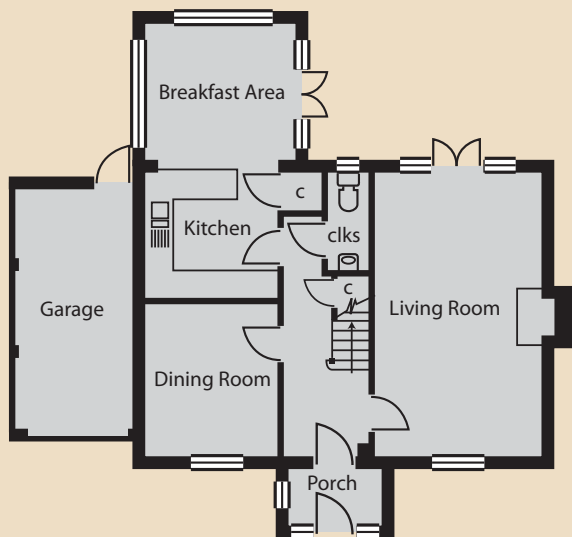




*Jenny Moody*  
Homes we are proud to put our name to

## Claygate in Gosfield - Plot 2

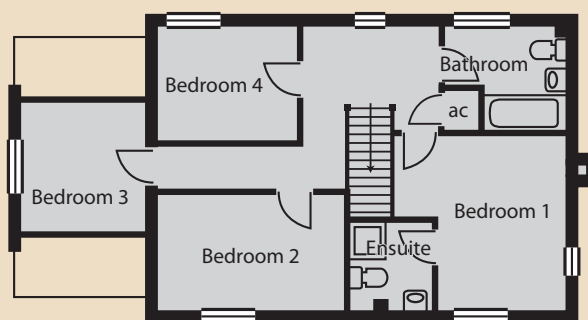
### Ground Floor



#### Specifications

Living Room	3625 x 6215mm / 11'10" x 20'4"
Dining Room	3065 x 3325mm / 10'0" x 10'11"
Kitchen\	3475 x 6010mm / 11'4" x 19'8" (max)
Breakfast Area	

### First Floor



#### Specifications

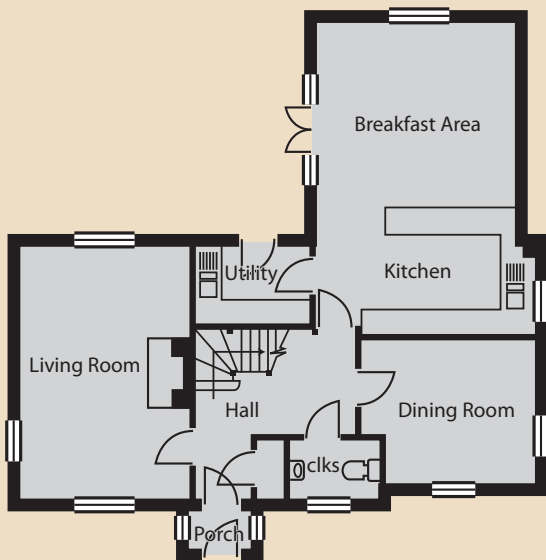
Bedroom 1	3650 x 3940mm / 11'11" x 12'11" (max)
Bedroom 2	4190 x 2570mm / 13'9" x 8'5"
Bedroom 3	2775 x 2775mm / 9'1" x 9'1"
Bedroom 4	3190 x 2570mm / 10'5" x 8'5"



## Lambourne in Gosfield - Plot 3

*Jenny Moody*  
Homes we are proud to put our name to

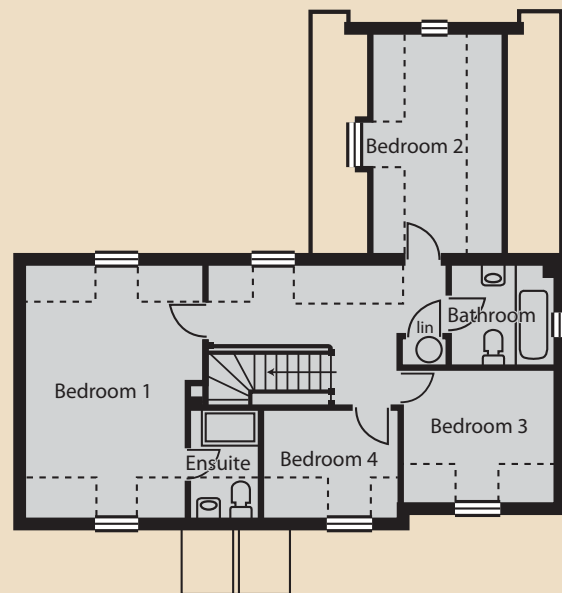
### Ground Floor



#### Specifications

Living Room	3875 x 5615mm / 12'8" x 18'5"
Dining Room	3705 x 3075mm / 12'2" x 10'1"
Kitchen\	4705 x 7085mm / 15'5" x 23'3" (max)
Breakfast Area	

### First Floor



#### Specifications

Bedroom 1	3875 x 5615mm / 12'8" x 18'5" (max)
Bedroom 2	2975 x 4695mm / 9'9" x 15'5" (max)
Bedroom 3	3175 x 2885mm / 10'5" x 9'5"
Bedroom 4	2875 x 2340mm / 9'5" x 7'8"